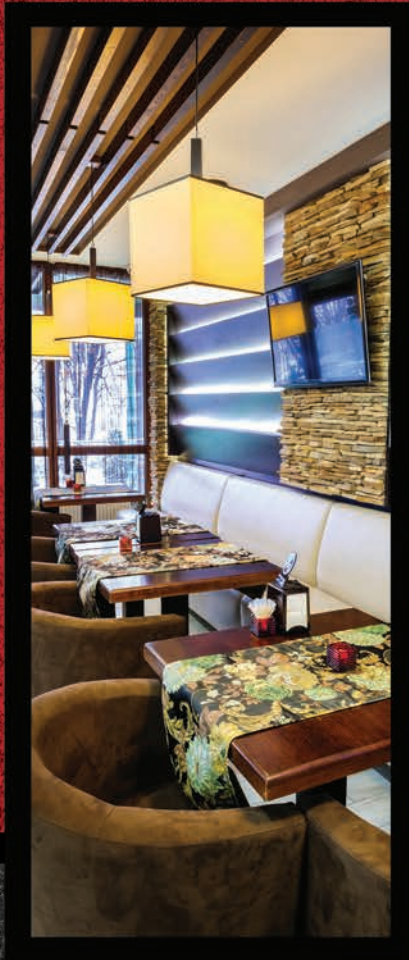


NOTHING HOLDS UP BETTER

VIDEO MOUNT PRODUCTS MOUNTING SOLUTIONS FOR AV, COMMUNICATIONS AND SECURITY



PRODUCT CATALOG

VMP

NOTHING HOLDS UP BETTER

VIDEO MOUNT PRODUCTS MOUNTING SOLUTIONS FOR AV, COMMUNICATIONS AND SECURITY

Everyone agrees that there is nothing like having great tools. The catalog in your hands is one of the great tools for selecting reliable and affordable mounting solutions, as well as streamlining what can often be a confusing and redundant process.

We have assembled a concise, but flexible and complete, offering of products that serve our growing customer base in the A/V, Communication and Security industries. This "Cross- Platform" approach has distinguished VMP as a reliable business partner for more than 23 years in a business environment that doesn't always lend itself to that kind of longevity. It is a testimony to many things but foremost, it is a testimony to the strong relationships we've had the great fortune of building since 1994. Our products continue to be installed with confidence in countless thousands of schools, restaurants, businesses, residences, houses of worship, hospitals, sports complexes and security applications throughout the world. Our product line continues to mature and still includes flat panel and projector mounts, but we have expanded our offering of equipment cabinets and racks, once again, as well as satellite and antenna mounts and accessories.

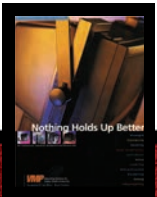
We are forever grateful for your support and look forward to your continued inclusion of our products in your specifications and installations. Since our founding, we have reminded you that "With VMP, Nothing Holds up Better" and we will always work our hardest to prove ourselves a strong partner and worthy supplier.

Thanks for choosing Video Mount Products!

1994



1998



2002



2004



2006



2008



2010



2012



2014



345 LOG CANOE CIRCLE | STEVENSVILLE, MD 21666
410.643.6390 | INFO@VIDEOMOUNT.COM | WWW.VIDEOMOUNT.COM



TABLE OF CONTENTS

4	FLAT PANEL MOUNTS	22	EQUIPMENT RACKS & CABINET ENCLOSURES
4	Articulating Wall Mounts	26	Wall Cabinets
5	Dual Mount adaptors	28	Wall Cabinets – Extended Depth
6	Tilt Wall Mounts	■	Wall Cabinet Accessories
6	Digital Signage/Menu Boards	30	Open Frame Equipment Racks
8	Flush Wall Mounts	31	Expansion Kits
10	Ceiling Mounts	32	Equipment Wall Racks & Wall Shelf
■	Dual Mount Adaptors	33	Equipment Rack Shelves
13	Ceiling Mount Accessories	36	Rack & Cabinet Accessories
18	Specialized Mounts		
19	Tablet and Flat Panel Mount Adaptors	38	LOCKBOXES
20	PROJECTOR MOUNTS	40	SATELLITE & ANTENNA MOUNTS
22	EQUIPMENT RACKS & CABINET ENCLOSURES	43	TURNTABLES
22	Floor Cabinets	44	WALL MOUNT SHELVES & IN-WALL BOX
22	Standard Depth	45	SPEAKER MOUNTS
24	Extended Depth	46	RESOURCES & QUICK FIND INDEX
25	Floor Cabinet Accessories		



FP-LWAB *Large Flat Panel Articulating Mount*

- Holds 42" – 80" flat panels
- Maximum mounting hole pattern - 800mm x 500mm
- Low profile depth of 2.9" when collapsed and 18.2" fully extended
- Adjustable tilt - 0° to 15°
- Rotates - ±45°
- List adjustment of ±3°
- Mounting rails accept padlocks
- Clip based cable management system
- Load capacity -150 lbs
- Black powder coat finish



FP-XMLPAB *Extra Medium Low Profile Flat Panel Articulating Mount*

- Holds 32" – 52" flat panels
- Maximum mounting hole pattern - 600mm x 400mm
- Low profile depth of 1.5" when collapsed and 16.2" fully extended
- Adjustable Tilt - -2° to +10°
- Rotates - ±45°
- List adjustment - ±3°
- Integrated cable management and level
- Load capacity - 100 lbs
- Black powder coat finish



FP-MLPAB *Medium Low Profile Flat Panel Articulating Mount*

- Holds 27" – 42" flat panels
- Maximum mounting hole pattern – 400mm x 400mm
- Low profile depth of 1.6" when collapsed and 16.4" fully extended
- Adjustable tilt - -2° to +10°
- Rotates - ±45°
- List adjustment - ±3°
- Integrated cable management system and level
- Load capacity - 55 lbs
- Black powder coat finish

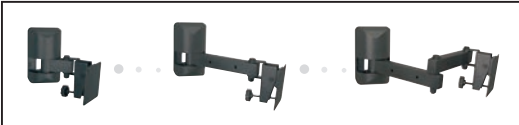


LCD-2537B *Multi-Configurable Medium Flat Panel Articulating Mount*

- Holds 25" – 32" flat panels
- Accommodates flat panels with 75, 100, 200 or 100 x 200mm VESA hole patterns
- Maximum extension from wall – 14"
- Adjustable -5° to +20° tilt
- Rotates 240° at the elbow joint (double arm configuration)
- Rotates 160° at the wall / Rotates 240° at the panel
- Load capacity - 50 lbs / Black powder coat finish

LCD-2537 *Same as above except with silver finish*

Multi-Configuration Options



LCD-1B *Multi-Configurable Small Flat Panel Articulating Mount*

- Holds 10" – 23" flat panels
- Accommodates flat panels with 75 or 100mm VESA hole patterns
- Maximum extension from wall – 15"
- Adjustable -5° to +20° tilt
- Rotates 240° at the elbow joint (double arm configuration)
- Rotates 160° at the wall / Rotates 240° at the panel
- Load capacity - 25 lbs / Black powder coat finish



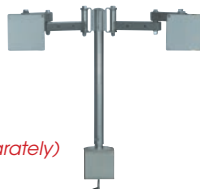
LCD-1 *Same as above except with silver finish*



LCD-DM2 *Dual Small Flat Panel Desk Mount Adaptor*

- Allows attachment of two LCD-1 mounts (sold separately) to create side by side viewing
- Mounting pole telescopes from 18" - 24"
- Can be attached as a clamp-on or bolt through mount (with parts provided)
- Load capacity - 50 lbs
- Silver powder coat finish

** Shown with two LCD-1's (sold separately)*

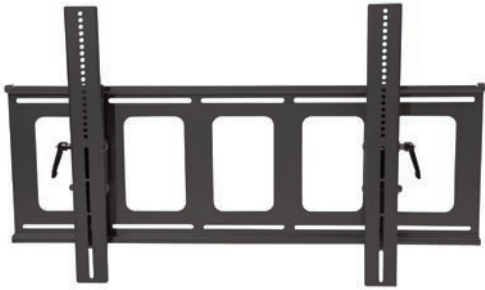


LCD-WM2B *Dual Small Flat Panel Wall Mount Adaptor*

- Allows attachment of two LCD-1B mounts (sold separately) to create side by side viewing
- Arm extends 11" from wall
- Load capacity - 50 lbs
- Black powder coat finish

** Shown with two LCD-1B's (sold separately)*





PDS-LFTB *Large Flat Panel Tilt Mount*

- Holds 42" – 90" flat panels
- Maximum mounting hole pattern – 850mm x 530mm
- Adjustable -5° to +15° tilt
- Distance from wall to back of the flat panel – 2.6"
- Load capacity – 180 lbs / Black powder coat finish

PDS-LFT *Same as above except with silver finish*

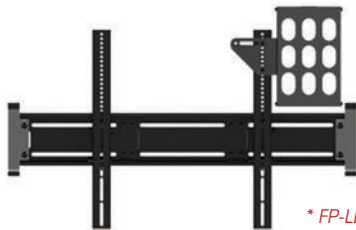


FP-LDSB *Large Flat Panel Digital Signage Mount*

- Holds 42" - 90" flat panels in portrait or landscape
- Maximum mounting hole pattern – 810mm x 530mm (810mm x 810mm with included extensions)
- Adjustable -5° to +15° tilt lockable in 5° increments
- Sectional wall plate can be integrated with multiple FP-LDSB's to create a video wall using DS-BP
- Distance from wall to back of the flat panel – 2.5" (2.6" with extensions)
- Utilizes tamper resistant hardware
- Load capacity – 180 lbs / Black powder coat finish



Perfect for menu boards



* FP-LDSB with DS-CH



* FP-LDSB extended with DS-BP



DS-CH *Digital Signage Computer or Component Holder*

- Allows for the secure attachment of a digital signage computer, or other component, to a wall or ceiling mount
- Attaches to mounting rails in landscape or portrait positions to better hide behind the flat panel
- Utilizes tamper resistant hardware
- Works with VMP models FP-LDSB, PDS-LCB and PDS-LFTB as well as other manufacturers' mounts
- Interior dimensions – 11" x 7" x 2.375"
- Black powder coat finish



DS-BP *Wall Plate Extension*

- Used with the FP-LDSB to extend the wall plate an additional 12" to add additional flat panels
- Black powder coat finish



FP-XMFTB *Extra Medium Flat Panel Tilt Mount*

- Holds 32" – 52" flat panels
- Maximum mounting hole pattern – 616mm x 400mm
- Adjustable -5° to +15° tilt
- Distance from wall to back of the flat panel – 2.3"
- Utilizes tamper resistant hardware
- Load capacity – 120 lbs / Black powder coat finish

FP-XMFT *Same as above except with silver finish*



FP-MFTB *Multi-Just™ Medium Flat Panel Tilt Mount*

- Holds 27" – 42" flat panels
- Maximum mounting hole pattern – 415mm x 345mm
- Adjustable -5° to +15° tilt
- Vertical height adjustment – 1" / List adjustment – ±3°
- Installer friendly kickstand
- Distance from wall to back of the flat panel – 2.3"
- Load capacity – 100 lbs / Black powder coat finish



LCD-MID-FTB *Medium Flat Panel Tilt Mount*

- Holds 27" – 42" flat panels
- Maximum mounting hole pattern – 410mm x 340mm
- Adjustable -5° to +15° tilt
- Distance from wall to back of the flat panel – 2.4"
- Accommodates multiple double gang boxes
- Load capacity – 100 lbs / Black powder coat finish

LCD-MID-FT *Same as above except with silver finish*



FP-SFTB *Small Flat Panel Tilt Mount*

- Holds 10" – 23" flat panels
- Accommodates flat panels with 75 or 100mm VESA hole patterns
- Adjustable -5 to +15° tilt
- Distance from wall to back of the flat panel – 1.7"
- Utilizes tamper resistant hardware
- Load capacity – 25 lbs / Black powder coat finish

FP-SFT *Same as above except with silver finish*



FP-LFB *Large Flat Panel Flush Mount*

- Holds 42" – 90" flat panels
- Distance from wall to the back of the flat panel - 1.4"
- Maximum mounting hole pattern – 850mm x 500mm
- Utilizes tamper resistant hardware
- Accommodates multiple double gang boxes
- Load capacity – 180 lbs
- Black powder coat finish

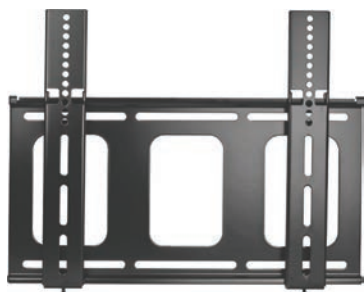
FP-LF *Same as above except with silver finish*



FP-LFVB *Large Flat Panel Flush Mount - Ultra Low Profile*

- Holds 42" – 70" flat panels
- Maximum mounting hole pattern – 890mm x 540mm
- Distance from wall to back of the flat panel – 0.85"
- Utilizes tamper resistant hardware
- Load capacity – 150 lbs
- Black powder coat finish

FP-LFV *Same as above except with silver finish*



LCD-MID-FB *Medium Flat Panel Flush Mount*

- Holds 27" – 42" flat panels
- Maximum mounting hole pattern – 410mm x 340mm
- Distance from wall to back of the flat panel – 1"
- Accommodates multiple double gang boxes
- Utilizes tamper resistant hardware
- Load capacity – 125 lbs
- Black powder coat finish



FP-MFB *Medium Flat Panel Flush Mount - Ultra Low Profile*

- Holds 27" – 42" flat panels
- Maximum mounting hole pattern – 440mm x 330mm
- Distance from wall to back of the flat panel – 0.7"
- Utilizes tamper resistant hardware
- Load capacity – 100 lbs
- Black powder coat finish

FP-MF *Same as above except with silver finish*



FP-SFB *Small Flat Panel Flush Mount*

- Holds 10" – 30" flat panels
- Accommodates flat panels with 75, 100, 200 or 100 x 200mm VESA hole patterns
- Quick connect/disconnect design
- Distance from wall to back of the flat panel – 0.5"
- Utilizes tamper resistant screws to provide extra security
- Load capacity – 50 lbs
- Black powder coat finish





PDS-LCB *Large Flat Panel Ceiling Mount*

- Holds 37" - 90" flat panels
- Maximum mounting hole pattern - 860mm x 500mm
- Mast telescopes 23" - 35"
- Rotates 360°
- Adjustable 0° - 15° tilt
- Cable management through the center of the mast
- Utilizes tamper resistant hardware
- Load capacity - 180 lbs
- Black powder coat finish

PDS-LC *Same as above except with silver finish*



PDS-LCM2B *Dual Large Flat Panel Ceiling Mount Adaptor*

- Holds 37" - 90" flat panels
- Adapts PDS-LCB (sold separately) to accommodate a second flat panel
- Maximum mounting hole pattern - 860mm x 500mm
- Rotates 360°
- Adjustable 0° - 15° tilt
- Combined load capacity of PDS-LCB and PDS-LCM2B - 380 lbs
- Black powder coat finish

** Shown with PDS-LCB (sold separately)*



PDS-LCHB *Large Flat Panel Ceiling Mount - Head Only*

- Holds 37" - 90" flat panels
- Maximum flat panel hole pattern - 860mm x 500mm
- Rotates 360°
- Adjustable 0° - 15° tilt
- Uses standard 1.5" NPT masting
- Load capacity - 180 lbs
- Black powder coat finish



Perfect for replacing existing monitors and flat panels using pre-existing 1.5" NPT pipe



LCD-MID-CB *Medium Flat Panel Ceiling Mount*

- Holds 27" – 42" flat panels
- Maximum mounting hole pattern – 410mm x 340mm
- Mast telescopes 23" – 35"
- Rotates 360° / Adjustable -5° to +20° tilt
- Cable management through the center of the mast
- Load capacity – 100 lbs
- Black powder coat finish

LCD-MID-C *Same as above except with silver finish*

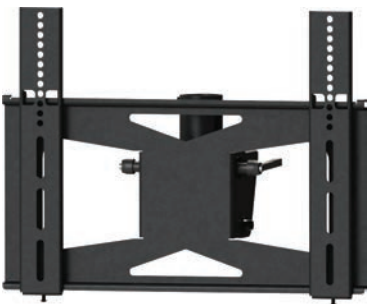


LCD-MID-CM2B *Dual Medium Flat Panel Ceiling Mount Adaptor*

- Holds 27" – 42" flat panels
- Adapts LCD-MID-CB (sold separately) to accommodate a second flat panel
- Maximum mounting hole pattern – 410mm x 340mm
- Adjustable -5° to +20° tilt
- Combined load capacity of LCD-MID-CB and LCD-MID-CM2B – 200 lbs
- Black powder coat finish

LCD-MID-CM2 *Same as above except with silver finish*

** Shown with LCD-MID-CB (sold separately)*



LCD-MID-CHB *Medium Flat Panel Ceiling Mount - Head Only*

- Holds 27" – 42" flat panels
- Maximum mounting hole pattern - 410mm x 340mm
- Rotates 360° / Adjustable -5° to +20° tilt
- Uses standard 1.5" NPT masting
- Load capacity – 100 lbs
- Black powder coat finish



Perfect for replacing existing monitors and flat panels using pre-existing 1.5" NPT pipe



LCD-2537CB *Medium Flat Panel Ceiling Mount*

- Holds 25" – 37" flat panels
- Accommodates flat panels with 75, 100, 200 or 100 x 200mm VESA hole patterns
- Mast telescopes 18" – 30"
- Rotates 360° (mast) / Rotates 240° (panel)
- Adjustable -5° to +20° tilt
- Load capacity - 75 lbs / Black powder coat finish

LCD-2537C *Same as above except with silver finish*

EXT-A *Acts as an inline splice to extend the drop length of the LCD-2537CB by up to 28"*



LCD-1CB *Small Flat Panel Ceiling Mount*

- Holds 10" – 23" flat panels
- Accommodates flat panels with 75 or 100 mm VESA hole patterns
- Mast telescopes 17" – 27"
- Rotates 360° (mast) / Rotates 240° (panel)
- Adjustable -5° to +20° tilt
- Includes clip based cable management system
- Load capacity - 25 lbs / Black powder coat finish

LCD-1C *Same as above except with silver finish*

LCD-1CW *Same as above except with white finish*

EXT-B *Acts as an inline splice to extend the drop length of the LCD-1CB by up to 28"*



** Shown with LCD-1CB (sold separately)*

LCD-CM2B *Dual Small Flat Panel Ceiling Mount Adaptor*

- Holds 10" – 23" flat panels
- Adapts LCD-1CB (sold separately) to accommodate a second flat panel with 75 or 100mm VESA hole patterns
- Adjustable -5° to +20° tilt
- Rotates 240° at panel
- Combined load capacity of LCD-CM2B and LCD-1CB - 50 lbs
- Black powder coat finish

SCM-1 *Suspended Ceiling Adaptor*



- For use with 2' x 2' or 2' x 4' suspended ceiling grids
- Can be used with standard 1.5" NPT pipe or VMP ceiling masts
- Includes 20 feet of tie wire
- Four (4) integrated standard electrical KO's
- Includes 3" threaded coupler pipe
- Includes ceiling mast finishing ring
- Load capacity - 75lbs
- White powder coat finish

SCM-2 *Suspended Ceiling Replacement Tile*



- For use with 2' x 2' or 2' x 4' suspended ceiling grid
- Unit can be rotated for 9 possible mounting location options
- Can be used with standard 1.5" NPT pipe or VMP ceiling masts
- Includes 30 feet of tie wire
- Four (4) integrated standard electrical KO's
- Includes 3" threaded coupler pipe
- Includes ceiling mast finishing ring
- Load capacity - 200lbs
- White powder coat finish

CP-1 *Ceiling Plate For Standard 1.5" NPT Pipe*



- Universal ceiling flange works with all manufacturers' mounting systems when using standard 1.5" NPT pipe
- Provides base for ceiling installations
- Load Capacity - 380 lbs.
- Black powder coat finish

CP-2 *Same as above except for use with 1" NPT pipe and a load capacity of 250 lbs.*



CP-1PT *Ceiling Plate For Standard 1.5" NPT Pipe w/
Cable Pass-Through*

- Universal ceiling flange works with all manufacturers' mounting systems when using standard 1.5" NPT pipe
- Cable pass-through for easy cable management
- Provides base for ceiling installations
- Load Capacity – 380 lbs.
- Black powder coat finish



CCA-1 *Cathedral Ceiling Adaptor*

- Designed for angled ceiling installations and works with all manufacturers' mounting systems when using standard 1.5" NPT pipe
- Adjustable 0 - 45° Tilt
- Load Capacity – 180 lbs.
- Black powder coat finish



IBA-1 *I-Beam Adaptor*

- Adapts ceiling mounts to clamp to an I-Beam
- Works with all manufacturers' mounting systems when using 1.5" NPT pipe
- Accommodates 2.25" to 12" flange widths
- Accommodates maximum flange height of 1"
- Load Capacity – 250 lbs.
- Black powder coat finish



UA-1 *Unistrut® Adaptor*

- Adapts ceiling mounts to work with Unistrut® up to 1.625"
- Works with all manufacturers' mounting systems when using 1.5" NPT pipe
- Load Capacity – 180 lbs.
- Black powder coat finish



TCA-1 *Truss Ceiling Adaptor*

- Works with a wide variety of truss types
- Maximum circular dimensions – 3" OD
- Maximum rectangular dimensions – 3" x 3"
- Works with 1.5" NPT pipe and all VMP ceiling masts
- Cable pass throughs for cable management
- Load capacity – 180 lbs
- Black powder coat finish



* Pipe not included

VH-005B *Pipe/Ceiling Mast Electronic Component Holder*

- Works with all manufacturers' ceiling mounts using masting from 1" to 2" O.D.
- Accommodates DVD players, CD players, DVR's, HD receivers, and other electronic components
- Includes decorative plastic covers (not shown)
- Mounting "U" tray extends 13" from the pipe
- Load capacity – 25 lbs
- Black powder coat finish

VH-005 *Same as above except silver*



EXT-A *Extension Pipe*

- Acts as an in-line splice to extend drop length of LCD-2537CB, PM-2 and PM-3 by up to 28" (can be cut to desired length)
- 31" tempered steel mast
- Black powder coat finish

EXT-B *Same as above except works with LCD-1CB*



EXT-1830 *1.5" NPT Telescoping Extension – 18" to 30"*

- Works with any manufacturers' ceiling mounts which use 1.5" NPT pipe
- Works with VMP ceiling mounts that have been adapted to use 1.5" NPT pipe
- Adjustable from 18" to 30"
- Black powder coat finish

EXT-0609 *Same as above except adjustable from 6" - 9"*

EXT-1218 *Same as above except adjustable from 12" - 18"*

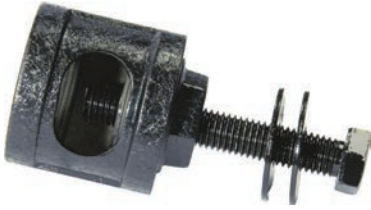
EXT-4872 *Same as above except adjustable from 48" - 72"*



AK-1 *1.5" NPT Pipe Coupler/Adapter Kit To Convert To 1.5" NPT Pipe*

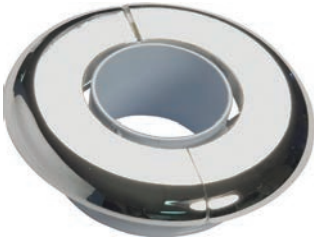
- Serves to couple 2 sections of threaded 1.5" NPT pipe
- Can be used to adapt PM-2, PM-3 and LCD-2537CB to enable use with standard 1.5" NPT pipe
- Load Capacity – 250 lbs.
- Black powder coat finish

AK-2 *Can be used as 1" NPT Pipe coupler or to adapt LCD-1CB to enable use with standard 1" NPT pipe with a load capacity of 200 lbs.*



AK-1PT *Adaptor Kit To Convert To 1.5" NPT Pipe w/ Cable Pass-Through*

- Adaptor kit for PM-2, PM-3B, LCD-1CB and LCD-2537CB, to enable use with threaded 1.5" NPT pipe
- Cable pass-through allows cables to be fed through the center of the mast
- Load Capacity – 250 lbs.
- Black powder coat finish



SCFR-1 *Suspended Ceiling Finishing Ring Kit*

- Finishing ring to clamp around 1.5" NPT pipe
- Includes an adaptor for VMP ceiling masts that are not 1.5" NPT pipe
- Chrome finish



VIDEO MOUNT PRODUCTS MOUNTING SYSTEMS FOR A/V, COMMUNICATIONS & SECURITY...NOTHING HOLDS UP BETTER!

TOLL FREE 877.281.2169 TELEPHONE 410.643.6390 FACSIMILE 410.643.6615 WEBSITE WWW.VIDEOMOUNT.COM



LCD-2B *Small Flat Panel Desk Mount*

- Holds 10" – 23" flat panels
- Accommodates flat panels with 75 or 100mm VESA hole patterns
- Rotates 360° at base
- Adjustable -5° to +30° tilt
- Force arm has adjustable 0° to 60° forward tilt
- Can be attached as a clamp-on or bolt through mount with parts provided
- Load capacity - 25 lbs
- Black powder coat finish

LCD-2 *Same as above except with silver finish*



LCD-PV *Public View LCD Monitor Mount Kit*

Kit Includes:

LCD-2537CB *Medium Flat Panel Ceiling Mount*

- Holds 10" – 37" LCD monitors
- Modified with two mounting locations for camera bracket
- Rotates 360° / Adjustable tilt -5° to +20°
- Mast telescopes 18" – 30"
- Load capacity - 75 lbs / Black powder coat finish

AK-1PT & CP-1PT *Adaptor Kit & Ceiling Plate*

- Used together, these units allow ceiling to mount extension drop distances of almost any length using standard 1.5" NPT pipe

Universal Camera Bracket

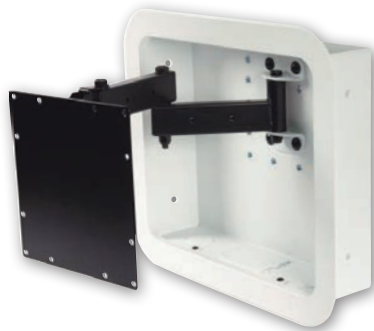
- Can be assembled into several different configurations
- Industry standard 1/4" – 20 UNC threading

Parts Provided



**Camera Not Included*

IWB-1B *In Wall Box*



- Use in conjunction with the LCD-1B or the LCD-2537B for a completely flush "No Profile" flat panel installation
- Holds 15" – 32" flat panels
- Installs between studs on 16" centers
- Integrated cable (4) and electrical knockouts (2)
- Load capacity – 50 lbs

IWB-1 *Same as above except for use with the LCD-1 and LCD-2537*



TMA-1 *Tablet Mount Adaptor*

- Holds Most Tablets 7" – 11"
- Works with LCD-1B, LCD-1CB, LCD-2B, FP-SFTB and FP-SFB
- Connects to other manufacturers 100 x 100 mm mounts
- Adjustable height and width
- Overall tablet size range:
 - 5.3" to 7.9" Wide / 7.7" to 10.6" High / .45" Deep
- Load Capacity – 6 lbs. / Black Finish



LCD-PA *Pole Adaptor*

- For use with LCD-1 and LCD-2537
- Adapts round or square poles to accept mount
- Stainless steel straps adjust to fit poles from 4" to 10" in diameter / Silver powder coat finish



AP-1B *400mm x 200mm VESA Adaptor Plate*

- Adapts a VESA 200mm plate to accommodate a VESA 400mm x 200mm hole pattern
- Black powder coat finish

AP-1 *Same as above except with silver finish*



AP-2B *300mm x 300mm VESA Adaptor Plate*

- Adapts a VESA 200mm plate to accommodate a VESA 300mm x 300mm hole pattern
- Black powder coat finish



AR-1B *Portrait Mounting Adaptor Rails*

- Adapts a wide variety of mounting rails to accept a maximum of 650mm vertical hole patterns
- Black powder coat finish

STRAP *Safety/Security Strap*

- 1" width by 10' length
- Saw tooth cinching buckle
- Black sturdy woven nylon blend construction



PM-LPB *Low Profile Projector Mount With Cable Pass-Through*

- Fits projectors with mounting holes inside 14.5" dia.
- Low 2.625" profile (includes the mounting feet)
- Adjustable tilt - $\pm 20^\circ$
- Adjustable pitch - $\pm 15^\circ$
- Adjustable yaw (rotation) - $\pm 180^\circ$ (360° Total)
- 1.5" NPT mast telescopes 23" – 35"
- Cable management through the center of the mast
- Flush mount plate and mounting screws included
- Load capacity - 75 lbs
- Black powder coat finish

PM-LP *Same as above except with silver finish*



Please see Page 16 for mast extension choices



PM-3B *Universal Projector Mount*

- Fits projectors with mounting holes inside 14.5" dia.
- Adjustable tilt - $\pm 20^\circ$
- Adjustable pitch - $\pm 15^\circ$
- Adjustable yaw (rotation) - $\pm 180^\circ$ (360° Total)
- Mast telescopes 18" – 30"
- Flush mount plate and mounting screws included
- Load capacity - 75 lbs
- Black powder coat finish

PM-3 *Same as above except with silver finish*

EXT-A *Acts as an inline splice to extend the drop length of the PM-3B by up to 28"*

PM-LPMB *Low Profile Projector Mount*



- Fits projectors with mounting holes inside 14.5" dia.
- Low 2.625" profile (includes the mounting feet)
- Adjustable tilt - $\pm 20^\circ$ / Adjustable pitch - $\pm 15^\circ$
- Adjustable yaw (rotation) - $\pm 180^\circ$ (360° total)
- Cable management through the center of the mount
- Ceiling plate and mounting screws included
- Uses standard 1.5" NPT masting
- Load capacity - 75 lbs / Black powder coat finish

PM-LPM *Same as above except with silver finish*

EXT-03F *3" Fixed Extension Mast – Black*



Please see Page 16 for mast extension choices



PM-2 *Small Clamping Projector Mount*

- Adjustable 0° to 10° tilt / Adjustable yaw (rotation) - 360°
- Opens from 7" to 13" (left to right)
- Opens from 3" to 5.75" (top to bottom)
- Mast telescopes 18" – 30"
- Eight-point clamping mechanism adjusts from 6.5" to 10" front to back
- Flush mount plate and mounting hardware included
- Load capacity - 75 lbs
- Black powder coat finish

EXT-A *Acts as an inline splice to extend the drop length of the PM-2 by up to 28"*





EREN-18 19" Equipment Rack Enclosure - 18U

- Welded steel construction
- Ships fully assembled
- Overall Dimensions – 39"H x 23.6"W x 23.6"D
- Usable Depth – 19.875"
- Works with all standard 19" rack equipment & accessories
- Preloaded with qty 3 ER-S2UV (2U Vented shelves) and qty 3 ER-2B (2U Blanks)
- Rails have numbered spaces with standard 10-32 threading
- Reversible tempered glass front door
- Double swing steel rear doors
- Adjustable front and rear rails / Vented top and bottom
- Pre-installed cooling fans (2)
- Top and bottom cable routing knockouts
- Reversible hinged front and rear doors
- Removable locking side panels
- Casters and leveling feet
- Load capacity – 1,000 lbs / Black powder coat finish

EREN-18E *Same as above except without the preloaded ER-S2UV's and ER-2B's*



EREN-27 19" Equipment Rack Enclosure - 27U

- Welded steel construction
- Ships fully assembled
- Overall Dimensions – 54.8"H x 23.6"W x 23.6"D
- Usable Depth – 19.875"
- Works with all standard 19" rack equipment and accessories
- Preloaded with qty 5 ER-S2UV (2U Vented Shelves) and qty 5 ER-2B (2U Blanks)
- Rails have numbered spaces with standard 10-32 threading
- Reversible tempered glass front door
- Double swing steel rear doors
- Adjustable front and rear rails
- Vented top and bottom
- Pre-installed cooling fans (2)
- Top and bottom cable routing knockouts
- Reversible hinged front and rear doors
- Removable locking side panels
- Casters and leveling feet
- Load capacity – 1,000 lbs / Black powder coat finish

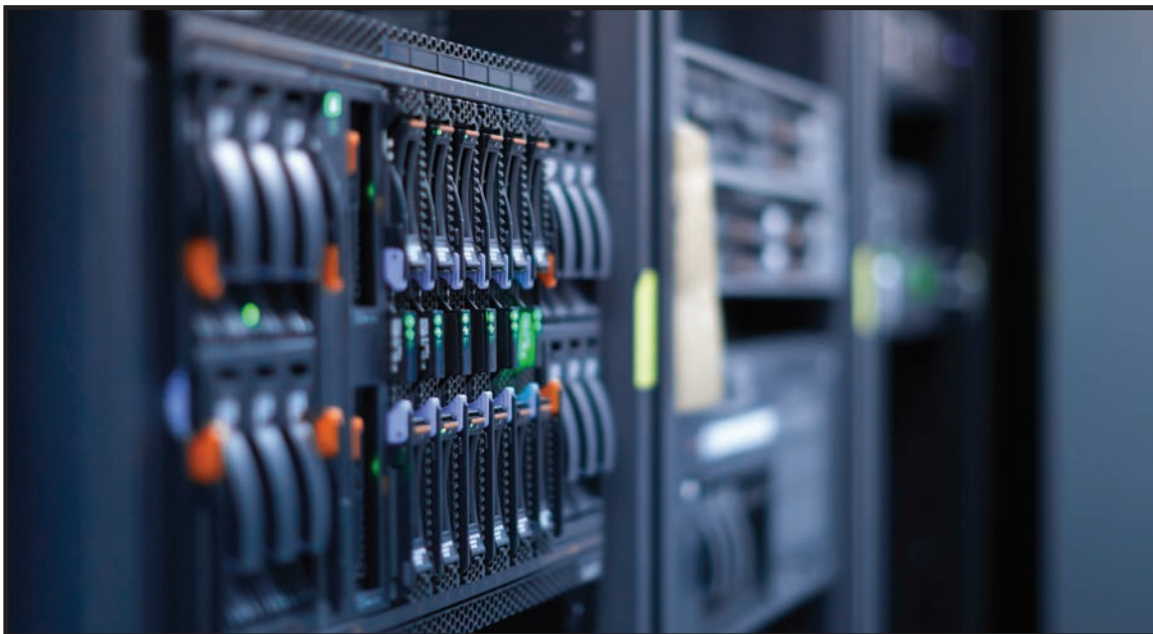
EREN-27E *Same as above except without the preloaded ER-S2UV's and ER-2B's*



EREN-42E 19" Equipment Rack Enclosure - 42U

- Welded steel construction
- Ships fully assembled
- Overall Dimensions – 81.1"H x 23.6"W x 23.6"D
- Usable Depth – 19.875"
- Works with all standard 19" rack equipment and accessories
- Rails have numbered spaces with standard 10-32 threading
- Reversible tempered glass front door
- Double swing steel rear doors
- Adjustable front and rear rails
- Vented top and bottom
- Pre-installed cooling fans (2)
- Top and bottom cable routing knockouts
- Reversible hinged front and rear doors
- Removable locking side panels
- Casters and leveling feet
- Load capacity – 1,000 lbs / Black powder coat finish

*The **EREN Series** is VMP's line of professional equipment rack enclosures. Fully assembled and welded, these units simplify on site installation. Each unit comes standard with a tempered glass front door, but you can customize yours with our door selection as well as a number of other helpful accessories.*





EREN-27E1K *19" Equipment Rack Enclosure – 27U – 1000mm Depth*

- Welded steel construction
- Ships fully assembled
- Overall Dimensions – 54.8" H x 23.6"W x 39.4"D
- Usable Depth – 33"
- Works with all standard 19" rack equipment and accessories
- Rails have numbered spaces with standard 10-32 threading
- Reversible tempered glass front door
- Double swing steel rear doors
- Adjustable front and rear rails
- Vented top and bottom
- Pre-installed 4 fan tray
- Top and bottom cable routing knockouts
- Reversible hinged front and rear doors
- Removable locking side panels
- Casters and leveling feet
- Load capacity – 1,300 lbs.
- Black powder coat finish



EREN-42E1K *19" Equipment Rack Enclosure – 42U – 1000mm Depth*

- Welded steel construction
- Ships fully assembled
- Overall Dimensions – 81.1" H x 23.6"W x 39.4"D
- Usable Depth – 33"
- Works with all standard 19" rack equipment and accessories
- Rails have numbered spaces with standard 10-32 threading
- Reversible tempered glass front door
- Double swing steel rear doors
- Adjustable front and rear rails
- Vented top and bottom
- Pre-installed 4 fan tray
- Top and bottom cable routing knockouts
- Reversible hinged front and rear doors
- Removable locking side panels
- Casters and leveling feet
- Load capacity – 1,300 lbs.
- Black powder coat finish



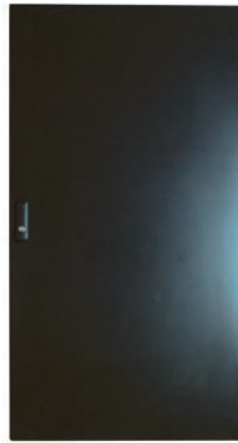
ERENGD
Tempered Glass Door
 ERENGD - 18
 ERENGD - 27
 ERENGD - 42



ERENPD
Perforated Vented Steel Door
 ERENPD - 18
 ERENPD - 27
 ERENPD - 42



ERENDSSD
Double Swing Steel Door
 ERENDSSD - 18
 ERENDSSD - 27
 ERENDSSD - 42



ERENSD
Solid Steel Door
 ERENSD - 18
 ERENSD - 27
 ERENSD - 42



ERENVCM-27
Vertical Cable Management - 27U

- Mounts into the EREN-27, EREN-27E and EREN-27E1K
- Flexible ABS finger ducting protects cables from damage
- Front plate is removable for easier running of cables
- Steel & ABS construction
- Black finish

ERENVCM-42 - Same as above except 42U and designed for the EREN-42E and EREN-42E1K



ERENSL *Side Panel Lock Kit*

- Works with EREN and ERWEN Series cabinets



ERWEN-15E *19" Equipment Hinged Wall Rack Enclosure - 15U*

- Welded steel construction
- Ships fully assembled
- Overall Dimensions – 30.5"H x 24.3"W x 21.9"D
- Usable Depth – 16"
- Works with all standard 19" rack equipment and accessories
- Rails have numbered spaces with standard 10-32 threading
- Adjustable front and rear rails
- Vented top and bottom
- Top and bottom cable routing knockouts
- Reversible hinged tempered glass front door
- Removable hinged back panel
- Removable locking side panels
- Load capacity – 120 lbs
- Black powder coat finish



ERWEN-12E *19" Equipment Hinged Wall Rack Enclosure - 12U*

- Welded steel construction
- Ships fully assembled
- Overall Dimensions – 25.3"H x 24.3"W x 21.9"D
- Usable Depth – 16"
- Works with all standard 19" rack equipment and accessories
- Rails have numbered spaces with standard 10-32 threading
- Adjustable front and rear rails
- Vented top and bottom
- Top and bottom cable routing knockouts
- Reversible hinged tempered glass front door
- Removable hinged back panel
- Removable locking side panels
- Load capacity – 120 lbs
- Black powder coat finish

ERWEN-9E *19" Equipment Hinged Wall Rack Enclosure - 9U*



- Welded steel construction
- Ships fully assembled
- Overall Dimensions – 19.9"H x 24.3"W x 21.9"D
- Usable Depth – 16"
- Works with all standard 19" rack equipment and accessories
- Rails have numbered spaces with standard 10-32 threading
- Adjustable front and rear rails
- Vented top and bottom
- Top and bottom cable routing knockouts
- Reversible hinged tempered glass front door
- Removable hinged back panel
- Removable locking side panels
- Load capacity – 120 lbs.
- Black powder coat finish

ERWEN-6E *19" Equipment Hinged Wall Rack Enclosure - 6U*



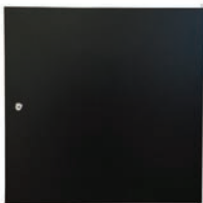
- Welded steel construction
- Ships fully assembled
- Overall Dimensions – 14.5"H x 24.3"W x 21.9"D
- Usable Depth – 16"
- Works with all standard 19" rack equipment and accessories
- Rails have numbered spaces with standard 10-32 threading
- Adjustable front and rear rails
- Vented top and bottom
- Top and bottom cable routing knockouts
- Reversible hinged tempered glass front door
- Removable hinged back panel
- Removable locking side panels
- Load capacity – 120 lbs
- Black powder coat finish



ERWEN-12E750 *19" Equipment Hinged Wall Rack Enclosure – 12U – 750mm Deep*

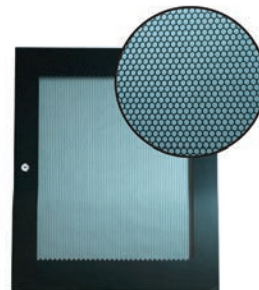
- Welded steel construction
- Ships fully assembled
- Overall Dimensions – 25.3"H x 24.3"W x 29.625"D
- Usable Depth – 24"
- Works with all standard 19" rack equipment and accessories
- Rails have numbered spaces with standard 10-32 threading
- Adjustable front and rear rails
- Vented top and bottom
- Top and bottom cable routing knockouts
- Reversible hinged tempered glass front door
- Removable hinged back panel
- Removable locking side panels
- Stabilizing hasp
- Load capacity – 120 lbs
- Black powder coat finish

*The **ERWEN Series** of wall cabinets is VMP's line of professional equipment wall enclosures. Space saving and full featured, the units come fully assembled and welded to streamline on-site installation. Each unit comes standard with a tempered glass front door, but you can customize yours with our additional door options.*



ERWENSD
Solid Steel Door

ERWENSD-6
ERWENSD-9
ERWENSD-12
ERWENSD-15



ERWENPD
Perforated Vented Steel Door

ERWENPD-6
ERWENPD-9
ERWENPD-12
ERWENPD-15

ERWEN2FANKIT *2 Fan Kit for Wall Enclosures*



- Compatible with ERWEN Series wall cabinets
- All fans wired to a common plug
- Maximum combined airflow – 180 CFM
- Works with standard 110V AC
- Power consumption - .38A/40W
- Includes mounting hardware
- Black finish

ERWENFAN *Fan for Wall Enclosures*



- Compatible with ERWEN Series wall cabinets
- Max air flow – 96 CFM
- Works with standard 110V AC
- Power consumption - .28A/25W
- Includes power cord and mounting hardware
- Black Finish

EREN3FANKIT *Rack Mount Three Fan Kit – 3U*



- Fits standard 19" racks and cabinets
- All fans wired to a common plug
- Maximum combined airflow – 270 CFM
- Works with standard 110V AC
- Power consumption - .57A/60W
- Height – 3U (5.25")
- Includes 10-32 rack screws / Black finish

EREN2FANKIT *2 Fan Kit for Floor Enclosures*



- Compatible with EREN Series floor cabinets
- All fans wired to a common plug
- Maximum combined airflow – 180 CFM
- Works with standard 110V AC
- Power consumption - .38A/40W
- Includes mounting hardware
- Black finish



ER-1 *19" Open Frame Rack – 40U*

- EIA compliant
- Overall Dimensions – 72.25"H x 20.3"W x 20"D
- Standard 10-32 threading
- Includes 32 rack screws
- Steel construction
- Load capacity – 400 lbs evenly distributed
- Black static resistant powder coat finish



ER-184 *19" Open Frame Rack – 45U*

- EIA compliant
- Overall Dimensions – 86.00"H x 20.3"W x 20"D
- Standard 10-32 threading
- Includes 32 rack screws
- Steel construction
- Load capacity – 400 lbs evenly distributed
- Black static resistant powder coat finish



ER-148 *19" Open Frame Rack – 27U*

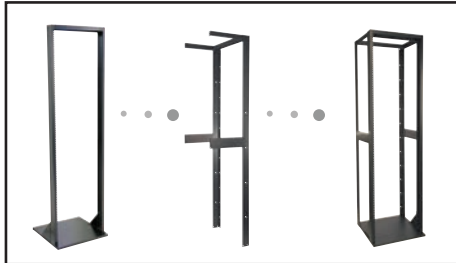
- EIA compliant
- Overall Dimensions – 49.25"H x 20.3"W x 20"D
- Standard 10-32 threading / Includes 32 rack screws
- Steel construction
- Load capacity – 400 lbs evenly distributed
- Black static resistant powder coat finish



ER-1-4PKIT 2 Post Expansion Kit For ER-1

- Provides additional weight stabilization and 4 post mounting capability for ER-1
- Includes side stabilizing bars / Steel construction
- Standard 10-32 threading in expansion posts
- Black static resistant powder coat finish

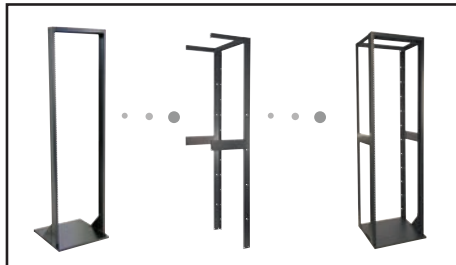
Assembly



ER-184-4PKIT 2 Post Expansion Kit for ER-184

- Provides additional weight stabilization and 4 post mounting capability for ER-184
- Includes side stabilizing bars / Steel construction
- Standard 10-32 threading in expansion posts
- Black static resistant powder coat finish

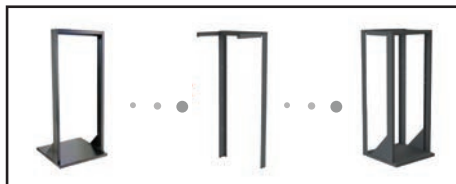
Assembly



ER-148-4PKIT 2 Post Expansion Kit For ER-148

- Provides additional weight stabilization and 4 post mounting capability for ER-148
- Standard 10-32 threading in expansion posts
- Steel construction / Black static resistant powder coat finish

Assembly





ER-W24 *Swing gate Wall Rack – 13U*

- EIA compliant
- Overall Dimensions – 28.1”H x 21.1”W x 22.85”D
- Usable depth - 19”
- Fixed wall plate allows easy installation and removal of populated rack
- Opens from either the left or the right side
- Standard 10-32 threading
- Steel and aluminum construction
- Load capacity – 100 lbs evenly distributed
- Black static resistant powder coat finish

 *Innovative lift on/off design allows for one man install*



ER-VR4U *Wall Mount Vertical Equipment Rack – 4U*

- Accommodates rack equipment of any depth
- Equipment can be wall mounted vertically or under a desk horizontally
- Overall Dimensions – 5”H x 19.2”W x 7.5”D
- Standard 10-32 threading
- Steel Construction
- Load Capacity – 150 lbs.
- Black finish

ER-VR2U *Same as above except 2U and overall depth of 4”*

ER-VR1U *Same as above except 1U and overall depth of 2.25”*



VWS *Vented Wall Shelf*

- Internal dimensions - 20.5” W x 17” D x 17” H
- Convenient quick-slide assembly
- Five cable supply locations
- Wall or backboard mount
- Load capacity - 200 lbs
- Black static resistant powder coat finish



ER-S1 *Economy Rack Shelf*

- Fits components up to 17" wide
- Two space racking height (2.6")
- Tray Depth - 12.5"
- Includes 10-32 and 12-24 rack screws
- Load capacity - 40 lbs
- Black powder coat finish



ER-S1V *Vented Economy Rack Shelf*

- Fits components up to 17" wide
- Two space racking height (2.6")
- Tray Depth - 12.5"
- Includes 10-32 and 12-24 rack screws
- Load capacity - 40 lbs
- Black powder coat finish



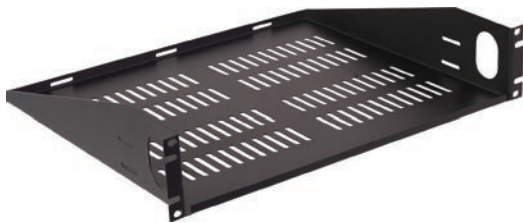
ER-S1UV *Vented 1U Rack Shelf*

- Fits components up to 17.375" wide
- 1U racking height (1.75")
- Tray depth - 14.75"
- Convenient tie down slots in rear of tray
- Includes 10-32 and 12-24 rack screws
- Load capacity - 50 lbs
- Black static resistant powder coat finish



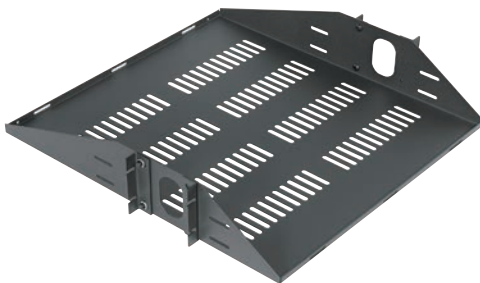
ER-S2U *2U Rack Shelf*

- Fits components up to 17.375" wide
- 2U racking height (3.5")
- Tray depth – 14.75"
- Convenient tie down slots in rear of tray
- Includes 10-32 and 12-24 rack screws
- Load capacity – 50 lbs
- Black static resistant powder coat finish



ER-S2UV *Vented 2U Rack Shelf*

- Fits components up to 17.375" wide
- 2U racking height (3.5")
- Tray depth – 14.75"
- Convenient tie down slots in rear of tray
- Includes 10-32 and 12-24 rack screws
- Load capacity – 50 lbs
- Black static resistant powder coat finish



ER-S2CM *Vented 2U Center Mount Rack Shelf*

- Fits components up to 17.375" wide
- 2U racking height (3.5")
- Tray depth – 19"
- Convenient tie down slots in front and rear of tray
- Includes 10-32 and 12-24 rack screws
- Load capacity – 50 lbs
- Black static resistant powder coat finish



ER-8RSA Adjustable Eight Receiver Rack Shelf

- Accommodates up to eight receivers
- Adjusts left to right and front to back
- Includes front and top anti-roll bars
- Includes 10-32 and 12-24 mounting screws
- Load capacity – 50 lbs
- Black powder coat finish
- US Patent #: 7,850,022

Additional Parts



** Additional Parts Include: Front and top anti-roll bars and additional receiver separators*



ER-SS1U Rack Mounted Sliding Shelf – 1U

- Closes flush when not in use
- Maximum extension – 13.8"
- Tray dimension – 16.3" W x 13.8" D x 1.75" H
- Includes 10-32 and 12-24 mounting screws
- Load capacity – 35 lbs
- Black static resistant powder coat finish



Can be used as a storage drawer when inverted



ER-S1U4P Vented 1U Adjustable Four Post Rack Shelf

- Fits components up to 16.85" wide (17.4" when shelf is flipped over)
- 1U Racking height (1.75")
- Tray depth adjustable from 14.75" to 25"
- Includes 10-32 and 12-24 rack screws
- Load capacity – 200 lbs. (When mounted to all 4 Posts)
- Black static resistant powder coat finish



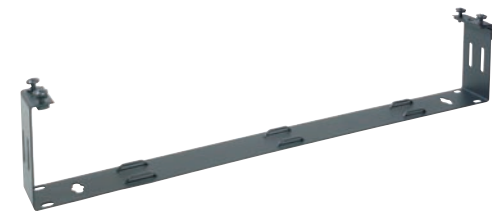
ER-LCD1017 LCD Monitor Rack Mount

- Holds monitors 10" – 17" / 9U racking height
- Can be inverted to hold monitors up to 23"
- Recesses monitor into rack
- Accommodates monitors with 75mm or 100mm VESA hole patterns
- Includes 10-32 and 12-24 rack screws
- Load capacity - 50 lbs
- Black static resistant powder coat finish



DVR-LB3 *Low Profile DVR / Storage Lockbox*

- Interior dimensions 17.2" W x 21" D x 5" H
- 3U racking height (5.25") when rack mounted on 2 or 4 posts
- Key locked hinged front door
- Multiple vents with removable vent blockers for active or passive thermal management
- Single fan included with mounting location for second fan
- Interlocking lift off lid
- Black static resistant powder coat finish



ER-HWB1 *Hinged Wall Bracket - 1U*

- Provides easy access to the back of mounted components
- Right or left hand opening
- 4" depth
- Includes 10-32 and 12-24 rack screws
- Black powder coat finish

ER-HWB2 *Same as above except 2U and cable pass through*



ER-DRCM1 *D-Ring Cable Manager - 1U*

- Large slotted metal rings manage all types and sizes of wire and cable
- Easy to install on equipment racks
- Includes 10-32 and 12-24 rack screws
- Black powder coat finish.

ER-DRCM2 *Same as above except 2U*



ER-1B *1U Blank Panel (1.75") (Shown Top)*

- Tempered 16 gauge steel
- Black static resistant powder coat finish

ER-2B *2U blank panel (3.5") (Shown Middle)*

ER-4B *4U blank panel (7") (Shown Bottom)*

ER-8B *8U blank panel (14") - (Not Shown)*



ER-RS1032-50 *50 Rack Screws*

- 0.75" long with 10 – 32 threads
- Nylon washers included
- Classic Phillips trim head
- Heat treated to resist stripping

ER-RS1032-100 *Same as above except
100 rack screws*



ER-CASTERS *Rack Casters*

- Heavy duty casters attach to the ER-1, ER-148 or ER-184
- Includes 4 casters
- Hole pattern – 2.375" x 3.375"
- Hardware to attach casters to rack included
- Maximum weight capacity of rack with casters – 400 lbs



DVR-LB1 *DVR Lockbox*

- Interior dimensions 21" W x 21" D x 8" H
- Vented and includes fan for additional thermal management
- Interlocking lift off lid
- Key locked hinged front door
- Black static resistant powder coat finish



DVR-LB3 *Low Profile DVR / Storage Lockbox*

- Interior dimensions 17.2" W x 21" D x 5" H
- 3U racking height (5.25") when rack mounted on 2 or 4 posts
- Key locked hinged front door
- Multiple vents with removable vent blockers for active or passive thermal management
- Single fan included with mounting location for second fan
- Interlocking lift off lid
- Black static resistant powder coat finish



DVR-MB1 *Mobile/Rackmount DVR Lockbox*

- Interior dimensions 17" W x 13.8" D x 3" H
- Lockbox is mountable on 4 sides for mobile applications
- Rack mountable with a 2U overall height (3.5")
- Removable lid secured with tamper proof hardware
- Multiple vents with removable vent blockers for active or passive thermal management
- Single fan included and mounting locations for up to four fans (DVRMB1FAN)
- Key locked hinged front door
- Mounting strips included for DVR in mobile applications
- Black static resistant powder coat finish



DVR-WA *DVR Lockbox Wall Mounting Arms*

- Works with the DVR-LB1 and DVR-LB3 to mount lockbox to 16" on center studs
- Load capacity – 50 lbs
- Black static resistant powder coat finish



** DVR-WA shown with the DVR-LB1*

DVR-LB1FAN *Replacement Fan*



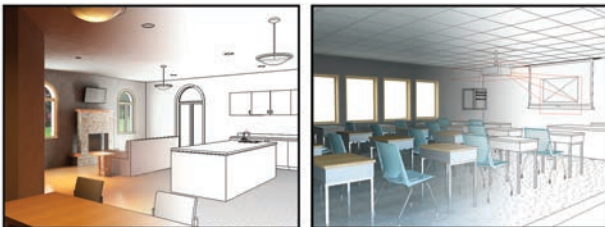
- Compatible with DVR-LB1 and DVR-LB3
- Air flow – 96 CFM
- Noise level – 43dBA
- Power – 110VAC / .28A / 25W
- Includes power cord and mounting hardware
- Black Finish

DVR-MB1FAN *Same as above except
110VAC / .05A/6W/28dBA/10CFM*



DVR-QFAN *Low Noise Replacement Fan*

- Compatible with DVR-LB1 and DVR-LB3
- Air Flow – 51CFM
- Noise Level – 25dBA
- Power – 110VAC / .09A / 10W
- Includes power cord and mounting hardware
- Black Finish



BIM (Building Information Modeling)
VMP offers one of the fastest growing modeling toolsets for project designers, builders and integrators. Find all of the VMP BIM models at: bimobject.com



FRM Series *Non-Penetrating Roof Mounts*

- For use with DBS, off-air antenna, satellite internet systems, and point to point CCTV signal transmission
- Galvannealed steel construction
- Holds up to eight 8" x 8" x 16" standard concrete blocks to anchor
- Dark gray weather resistant powder coat finish

FRM-125 60" mast with 1.25" O.D.
FRM-166 30" mast with 1.66" O.D.
FRM-200 30" mast with 2" O.D.
FRM-MAT Rubber Mat (36.75" x 42" x 0.125)
FRMA 2" to 2.375" Adaptor for FRM-200

*Satellite dish and J pipe
not included



PRM-2 *Non-Penetrating Pitched Roof Mount*

- Accommodates 18" and 24" DBS/DSS dishes
- Galvannealed steel construction
- Adjustable dish mounting plate
- Holds up to eleven 8" x 8" x 16" standard concrete blocks to anchor
- Includes pitch pad kit
- Dark gray weather resistant powder coat finish



TR Series *Heavy Duty Tripods*

- Tripods hold masts up to 1.75" OD
- Includes a pitch pad kit and universal mast clamp



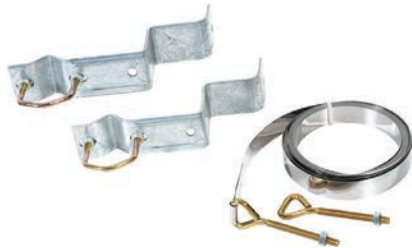
Installer friendly front facing feet

TR-36 36" heavy duty tripod
TR-60 60" heavy duty tripod



Y-MOUNT "Y" Type Chimney Mount

- Accommodates 1.25" to 1.66" antenna or DBS pipe
- Includes 0.75" by 18' anodized steel straps
- Sold in pairs



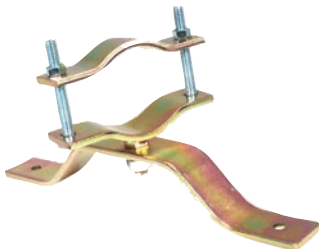
Z-MOUNT "Z" Type Chimney Mount

- Accommodates 1.25" to 1.66" antenna or DBS pipe
- Includes 0.75" by 18' anodized steel straps
- Sold in pairs



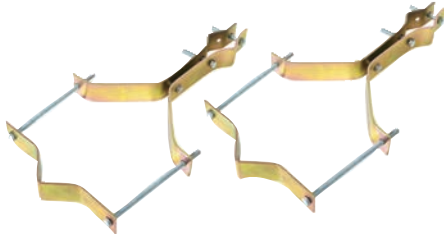
WB-6 6" Wall Mount

- U bolt mast holder with 6" clearance
- Accommodates 1.25" to 1.66" antenna or DBS pipe
- Sold in pairs



GU-3 Swivel Bracket

- Wall bracket mounts antenna or DBS pipe 3" off wall
- Accommodates 1.25" to 3" antenna or DBS pipe



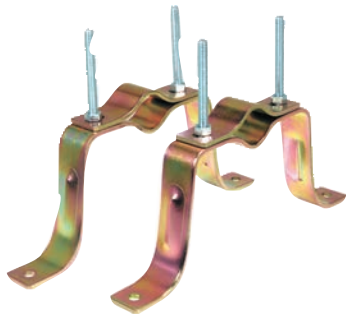
P-6 *Vent Pipe Mount*

- Mounting attachment for vent pipes 2.75" to 5" O.D.
- Accommodates 1" to 2" antenna or DBS pipe
- Sold in pairs



GEM-4060 *Adjustable Gable End Antenna Mount*

- Mounting bracket adjusts from 40" to 60" (left to right)
- Holds up to a 1.5" antenna mast



BR-4XD *Heavy Duty 4" Wall Mount*

- Accommodates 1" to 2.25" antenna or DBS pipe
- 3" clearance
- Sold in pairs



SM-1 *DBS Siding Mount*

- Accommodates the mounting of a DBS dish on house siding and creates a flat mounting platform for the DBS foot plate by nesting against the siding
- Constructed of heavy duty "DBS gray" plastic



TT-Series *Television/Flat Panel Turntable Series*

- TT-13** *Small Television/Flat Panel Turntable*
 - Platform width 15"
 - Depth 12" / Load capacity – 60 lbs
- TT-20** *Medium Television/Flat Panel Turntable*
 - Platform width 20"
 - Depth 15" / Load capacity – 75 lbs
- TT-27** *Large Television/Flat Panel Turntable*
 - Platform width 26"
 - Depth 16" / Load capacity – 125 lbs
- TT-32** *Mega Television/Flat Panel Turntable*
 - Platform width 32"
 - Depth 18" / Load capacity – 200 lbs



TT-LCD20S *Flat Panel Turntable*

- Platform width 20"
- Depth 14"
- Load capacity – 75 lbs
- Silver finish





**CH-001B shown stacked w/ the CH-002B (each sold separately)*

CH-001B *Wall Mount Electronic Component Shelf*

- Can be used for holding a single device or stacked for multiple components such as DVD players, CD players, DVRs and HD receivers
- Shelf dimensions – 13" W x 11" D
- Black tempered glass shelf
- Can be used in conjunction with any TV wall mount to design an entertainment center
- Load capacity – 25 lbs
- Black powder coat finish



**CH-002B shown stacked w/ the CH-001B (each sold separately)*

CH-002B *Large Wall Mount Electronic Component Shelf*

- Can be used for holding a single device or stacked for multiple components such as DVD players, CD players, DVRs and HD receivers
- Shelf dimensions – 18" W x 13" D
- Black tempered glass shelf
- Can be used in conjunction with any TV wall mount to design an entertainment center
- Load capacity – 25 lbs
- Black powder coat finish



IWB-1B *In Wall Box*

- Use as a pre-construction or retro-fit in wall box
- Installs between 16" centers
- Integrated cable (4) and electrical knockouts (2)
- Load capacity – 50 lbs



Streamlines A/V and power access connections



SP-200W *Multi-Configurable Speaker Mount*

- Virtually limitless number of configurations for the wall or ceiling and full range of tilt, twist and swivel
- Mounts on back of speaker
- Load capacity - 12 lbs
- High impact plastic / White finish / Sold in pairs

SP-200B *Same as above except with black finish*



SP-001 *Speaker Wall/Ceiling Mount*

- Swivels 180°
- Twists 180°
- Load capacity – 10 lbs
- Black powder coat finish
- Sold in pairs



SP-007 *Speaker Wall Mount*

- Swivels 180°
- Plate size 6" x 6"
- Load capacity – 12 lbs
- Black powder coat finish
- Sold in pairs



SP-010 *Adjustable Speaker Wall Mount*

- Adjusts to fit speakers with 6.5" to 11.5" depth
- Swivels 240° / Adjustable tilt 0° to 15°
- Load capacity – 20 lbs
- Black powder coat finish
- Sold in pairs



Subscribe to our Monthly Newsletter... It's EASY! Scan the QR code or visit us online to learn about the latest in mounting technology and more about what's going on at VMP!



Our staff is your number one resource.

Call our toll free line and speak directly to one of our team members with no prompts! 877.281.2169



Need help choosing the right mount for your application?

Check out the innovative VideoMount™ Finder tool at:
www.chooseamount.com



Find us on Facebook!

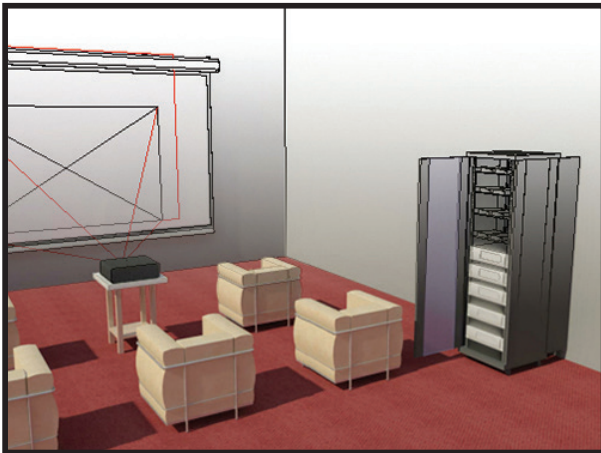
Find us on Facebook, and stay up to date with new products, what shows you can visit us at, and much more.



Link up with us on LinkedIn!

Find us on LinkedIn, and stay up to date with new products, what shows you can visit us at, and much more.

bimobject®



BIM (Building Information Modeling) VMP offers one of the fastest growing modeling toolsets for project designers, builders and integrators. Find all of the VMP BIM models at: bimobject.com

VIDEO MOUNT PRODUCTS MOUNTING SYSTEMS FOR A/V, COMMUNICATIONS & SECURITY...NOTHING HOLDS UP BETTER!

TOLL FREE 877.281.2169 TELEPHONE 410.643.6390 FACSIMILE 410.643.6615 WEBSITE WWW.VIDEOMOUNT.COM

A

AK-1 16

AK-1PT 17

AK-2 16

AP-1 19

AP-1B 19

AP-2B 19

AR-1B 19

B

BR-4XD 42

C

CCA-1 14

CH-001B 44

CH-002B 44

CP-1 13

CP-1PT 14

CP-2 13

D

DS-BP 6

DS-CH 6

DVR-LB1 38

DVR-LB3 36, 38

DVR-MB1 38

DVR-MB1FAN 39

DVR-LB1FAN 39

DVR-QFAN 39

DVR-WA 39

E

ER-1 30

ER-1-4PKIT 31

ER-148 30

ER-148PKIT 31

ER-184 30

ER-184-4PKIT 31

ER-1B 37

ER-2B 37

ER-4B 37

ER-8B 37

ER-8RSA 35

ER-CASTERS 37

ER-DRCM1 36

ER-DRCM2 36

EREN-18 22

EREN-18E 22

EREN-27 22

EREN-27E 22

EREN27E1K 24

EREN-42E 23

EREN42E1K 24

EREN3FANKIT 29

ERENDSSD-18 25

ERENDSSD-27 25

ERENDSSD-42 25

E cont'd

ERENGD-18 25

ERENGD-27 25

ERENGD-42 25

ERENPD-18 25

ERENPD-27 25

ERENPD-42 25

ERENSD-18 25

ERENSD-27 25

ERENSD-42 25

ERENSL 25

ERENVCM-27 25

ERENVCM-42 25

ER-HWB1 36

ER-HWB2 36

ER-LCD1017 35

ER-RS1032-50 37

ER-RS1032-100 37

ER-S1 33

ER-S1U4P 35

ER-S1UV 33

ER-S1V 33

ER-S2CM 34

ER-S2U 34

ER-S2UV 34

ER-SS1U 35

ER-VR1U 32

ER-VR2U 32

ER-VR4U 32

ER-W24 32

ERWEN-6E 27

ERWEN-9E 27

ERWEN-12E 26

ERWEN-12E750 28

ERWEN-15E 26

ERWEN2FANKIT 29

ERWENFAN 29

ERWENPD 28

ERWENSD 28

EXT-03F 21

EXT-0609 16

EXT-1218 16

EXT-1830 16

EXT-4872 16

EXT-A 16

EXT-B 16

F

FP-LDSB 6

FP-LF 8

FP-LFB 8

FP-LFV 8

FP-LFVB 8

FP-LWAB 4

FP-MF 9

FP-MFB 9

FP-MFTB 7

F cont'd

FP-MLPAB 4

FP-SFB 9

FP-SFT 7

FP-SFTB 7

FP-XMFT 7

FP-XMFTB 7

FP-XMLPAB 4

FRMA 40

FRM-MAT 40

FRM-125 40

FRM-166 40

FRM-200 40

G

GEM-4060 42

GU-3 41

I

IBA-1 14

IWB-1 18, 44

IWB-1B 18, 44

L

LCD-1 5

LCD-1B 5

LCD-1C 12

LCD-1CB 12

LCD-1CW 12

LCD-2 18

LCD-2B 18

LCD-2537 5

LCD-2537B 5

LCD-2537C 12

LCD-2537CB 12

LCD-CM2B 12

LCD-DM2 5

LCD-MID-C 11

LCD-MID-CB 11

LCD-MID-CHB 11

LCD-MID-CM2 11

LCD-MID-CM2B 11

LCD-MID-FB 8

LCD-MID-FT 7

LCD-MID-FTB 7

LCD-PA 19

LCD-PV 18

LCD-WM2B 5

P

P-6 42

PDS-LC 10

PDS-LCB 10

PDS-LCHB 10

PDS-LCM2B 10

PDS-LFT 6

PDS-LFTB 6

P cont'd

PM-2 21

PM-3 20

PM-3B 20

PM-LP 20

PM-LPB 20

PM-LPM 21

PM-LPMB 21

PRM-2 40

S

SCFR-1 17

SCM-1 13

SCM-2 13

SM-1 42

SP-001 45

SP-007 45

SP-010 45

SP-200W 45

SP-200B 45

STRAP 19

T

TCA-1 15

TMA-1 19

TR-36 40

TR-60 40

TT-13 43

TT-20 43

TT-27 43

TT-32 43

TT-LCD20S 43

U

UA-1 15

V

VH-005 15

VH-005B 15

VWS 32

W, Y, Z

WB-6 41

Y-MOUNT 41

Z-MOUNT 41



NOTHING HOLDS UP BETTER

VIDEO MOUNT PRODUCTS MOUNTING SOLUTIONS FOR AV, COMMUNICATIONS AND SECURITY



VIDEO MOUNT PRODUCTS

345 LOG CANOE CIRCLE | STEVENSVILLE, MD 21666

410.643.6390 | INFO@VIDEOMOUNT.COM | WWW.VIDEOMOUNT.COM

VMP